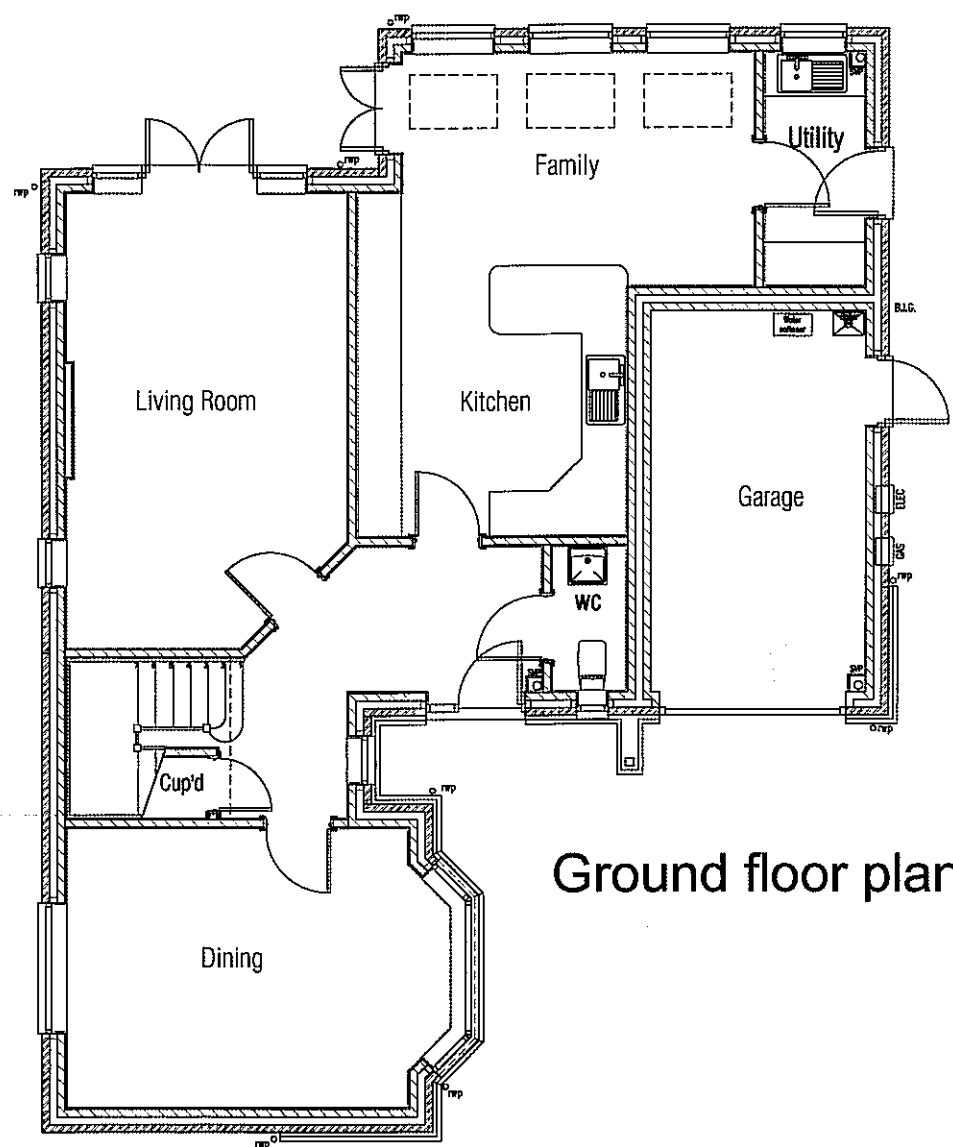


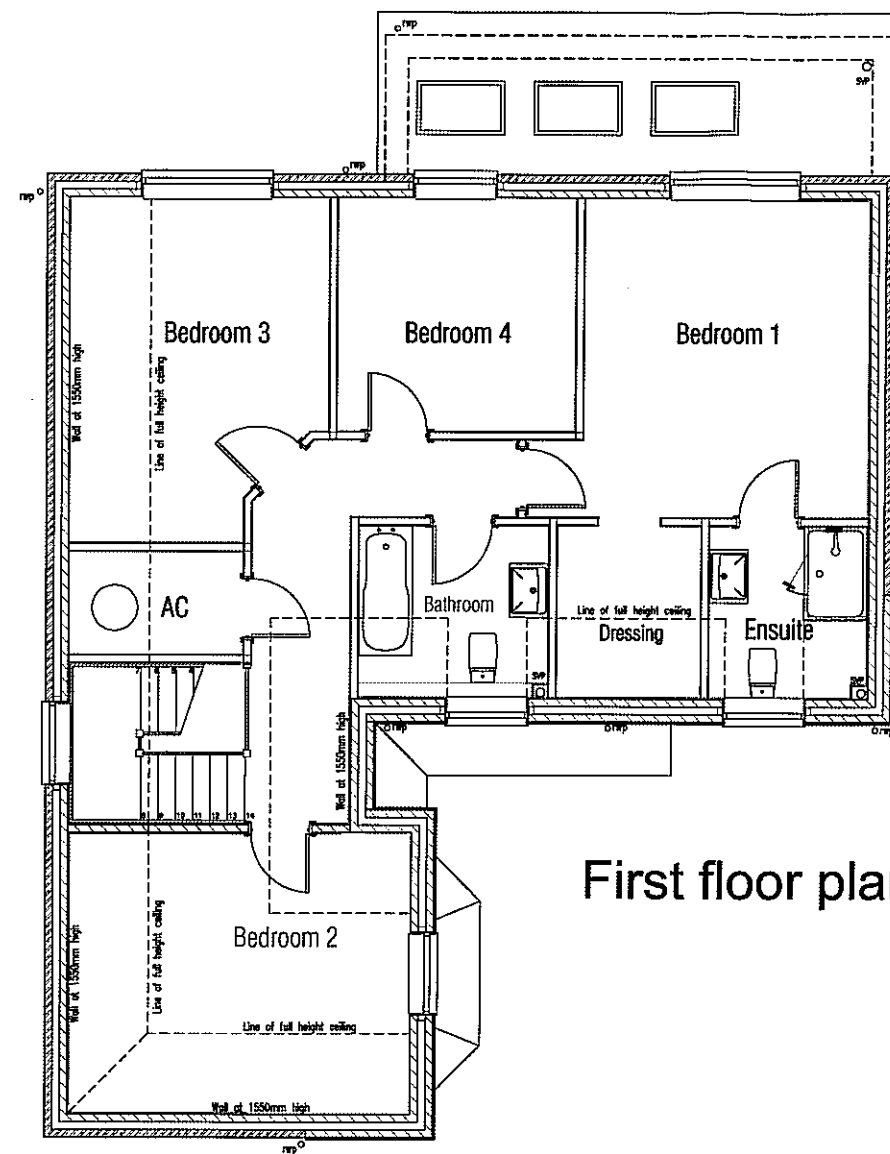
plot 4



Ground floor plan

Approximate Room Sizes:

Living Room	3.65m(12')x5.95m(19'6")max
Kitchen	3.5m(11'6")x4.488m(14'9")max
Family Area	3.05m(10')x4.56m(15')max
Dining Room	3.65m(12')x5.009m(16'5")max
Garage	5.0m(16'5")x2.81m(9'3")
Utility	



First floor plan

Approximate Room Sizes:

Bedroom 1	3.72m(12'2")x4.16m(13'8")
Dressing	
Bedroom 2	4.45m(14'7")x3.65m(12')
Bedroom 3	3.385m(11'1")x4.498m(14'9")max
Bedroom 4	3.086m(10'1")x3.038m(10')

Rev.	Description	Date

Jarvis
 No1 Wateride
 Station Road
 Harpenden
 Herts. AL5 4US
 tel: 01582 761211
 fax: 01582 711790
 www.jarvisgroupuk.co.uk

Title:
 Plot 4
 FLOOR PLANS
 Land to rear of
 42 Crabtree Lane
 Harpenden Herts AL5 5NS

Scale : 1:200 ● A3
 Date : April 2010 Drawn by: CJB

Dwg.No: CO/DV0018/PE1