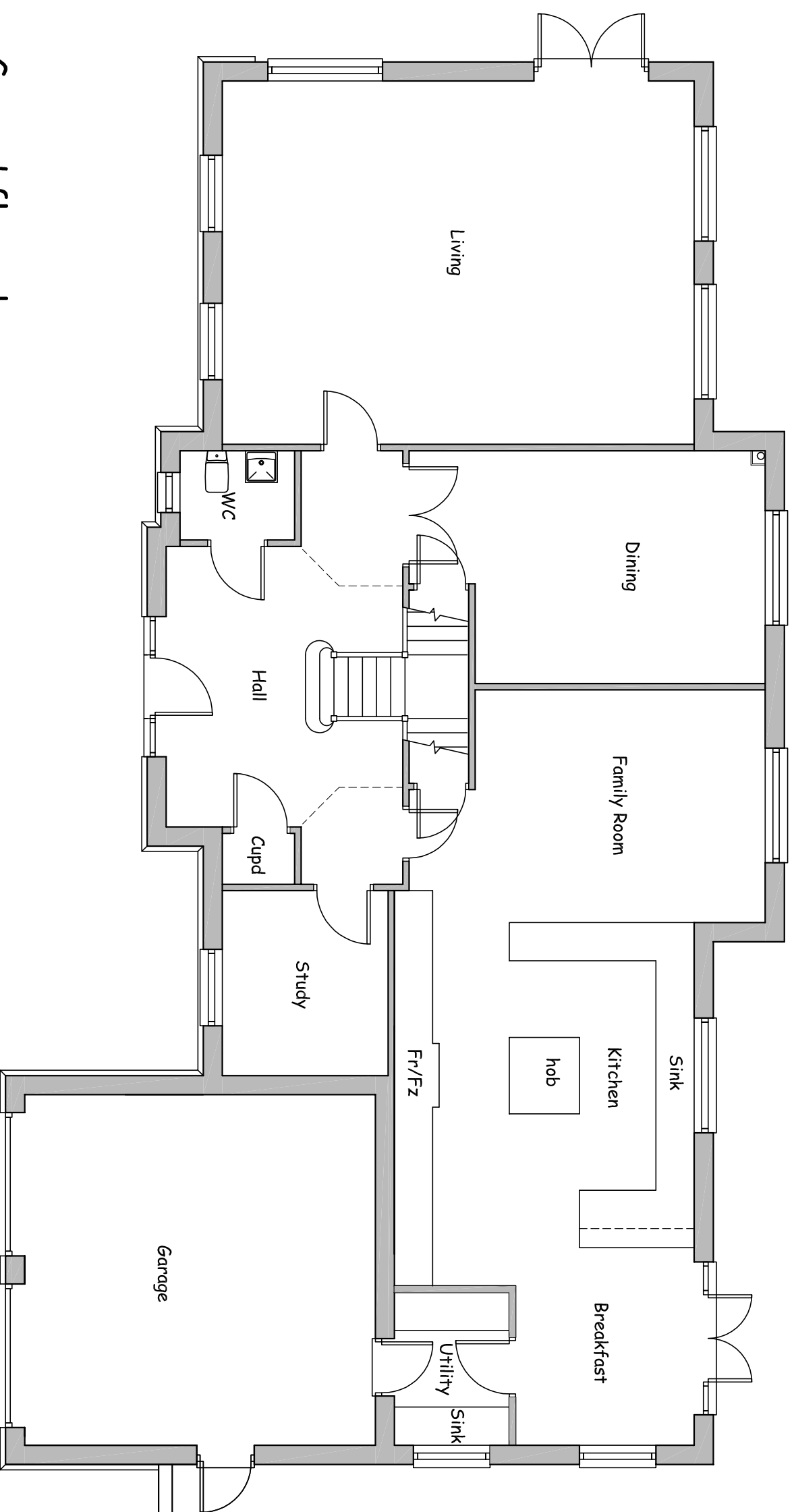


This drawing is the copyright of the Jarvis Group of Companies. All dimensions should be checked on site.



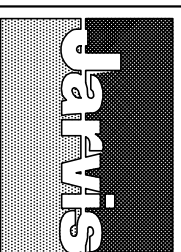
## Ground floor plan

### Approximate room dimensions

Living room	24'2" by 18'7"
Dining room	18'3" by 12' (max)
Family room	18'3" by 12' (max)
Kitchen/Brkfast	26'9" by 15'5"
Utility room	7'9" by 5'10"
Study	9'5" by 8'5"
Double garage	18'1" by 18'1"

Total floor area of house: 2925ft<sup>2</sup>

Rev.	Description.	Date.
------	--------------	-------



No1 Waterside  
Station Road  
Harpenden  
Herts. AL5 4US  
tel: 01582 761211  
fax: 01582 711790  
[www.jarvisgrouppld.co.uk](http://www.jarvisgrouppld.co.uk)

Group

Title:  
Plot 1  
New development at  
Rear of 'Hawthorns',  
The Warren, Radlett  
Ground Floor Plan

Scale : nts

Date : December 2009

Drawn by: AT

Drg.No: DV020-50